



Figure 1: 3D Model of the Property

## Contents

- Property Overview
  - Surfaces
  - Perimeter, Pitch and Surface Area
  - Edge Measurements
  - Edge Type
-



## Property Overview

---



Figure 2: Overview



## Surfaces

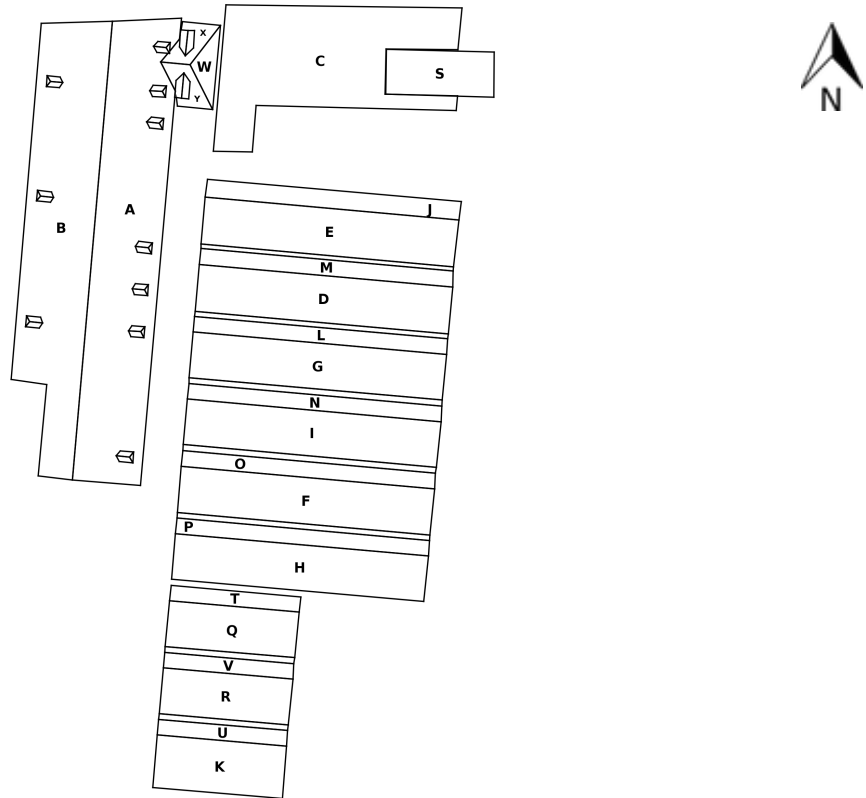


Figure 3: Surfaces



Perimeter, Pitch and Surface Area

Label	Perimeter	Slope	Pitch	Surface Area
A	417' 5 21/32"	45.72	12.3/12	5949.52
B	403' 4 1/8"	44.52	11.8/12	5331.29
C	333' 8 3/32"	1.02	0.2/12	2991.87
D	225' 2 3/4"	30.38	7.0/12	1845.84
E	224' 11 15/32"	30.29	7.0/12	1840.63
F	224' 0 13/16"	29.86	6.9/12	1804.04
G	224' 2 13/16"	30.36	7.0/12	1799.51
H	223' 7 9/16"	30.32	7.0/12	1787.11
I	223' 11"	29.98	6.9/12	1780.35
J	213' 4 29/32"	61.38	22.0/12	1286.58
K	139' 7 9/32"	30.99	7.2/12	1062.07
L	207' 11 31/32"	59.97	20.8/12	1050.5
M	207' 7 5/8"	59.09	20.0/12	1043.49
N	207' 11 3/8"	59.46	20.3/12	1043.39
O	207' 8 1/4"	59.05	20.0/12	1042.53
P	207' 6 7/32"	59.64	20.5/12	1039.41
Q	133' 6 1/2"	30.01	6.9/12	917.75
R	133' 4 7/16"	30.09	7.0/12	916.11
S	111' 6 23/32"	1.16	0.2/12	646.06
T	117' 9 3/4"	60.84	21.5/12	542.33
U	116' 11 27/32"	60.0	20.8/12	530.92
V	116' 11 5/32"	59.28	20.2/12	527.1
W	72' 5"	46.14	12.5/12	215.38
X	65' 8 3/16"	33.76	8.0/12	209.15
Y	64' 6 29/32"	32.74	7.7/12	204.76
Z	189' 5 3/4"	2.86	0.6/12	201.67
AA	189' 6 9/32"	0.6	0.1/12	198.18
AB	188' 7 29/32"	3.43	0.7/12	182.99
AC	188' 9 1/2"	4.07	0.9/12	168.01
AD	187' 11 9/32"	10.12	2.1/12	153.74
AE	98' 10 3/16"	4.26	0.9/12	102.21
AF	98' 6 7/8"	1.85	0.4/12	99.64
<b>Total</b>	-	-	-	<b>38514.13</b>

Table 1: Perimeter, Pitch and Surface Area (units: ffi / ff<sup>2</sup>)

### Perimeter, Pitch and Surface Area

Label	Perimeter	Slope	Pitch	Surface Area
AG	23' 8 7/16"	41.99	10.8/12	27.08
AH	23' 6 5/32"	41.22	10.5/12	26.55
AI	23' 5 13/32"	38.42	9.5/12	25.6
AJ	23' 2 3/4"	38.34	9.5/12	25.19
AK	15' 1 7/8"	28.71	6.6/12	11.26
AL	14' 11 7/32"	28.43	6.5/12	11.2
AM	14' 11 1/4"	32.27	7.6/12	11.09
AN	14' 11 11/16"	27.71	6.3/12	11.06
AO	14' 10 5/32"	26.55	6.0/12	11.01
AP	14' 10 3/8"	26.41	6.0/12	11.01
AQ	14' 10 19/32"	27.5	6.2/12	10.92
AR	14' 10 3/4"	24.85	5.6/12	10.92
AS	14' 11 13/32"	25.31	5.7/12	10.88
AT	14' 10 1/8"	30.58	7.1/12	10.88
AU	14' 7 19/32"	27.58	6.3/12	10.87
AV	14' 10 21/32"	27.97	6.4/12	10.84
AW	14' 5 3/8"	25.8	5.8/12	10.71
AX	14' 5 7/8"	30.61	7.1/12	10.39
AY	14' 5 27/32"	29.18	6.7/12	10.37
AZ	14' 3 11/32"	26.45	6.0/12	10.35
BA	14' 2 13/16"	26.7	6.0/12	10.28
BB	14' 6 29/32"	29.87	6.9/12	10.13
BC	14' 3 5/32"	25.91	5.8/12	10.11
BD	14' 3 3/8"	28.65	6.6/12	9.96
BE	9' 5 9/16"	39.52	9.9/12	3.71
BF	9' 6 1/32"	39.04	9.7/12	3.68
BG	9' 6 11/16"	38.13	9.4/12	3.63
BH	9' 4 13/32"	42.03	10.8/12	3.59
BI	9' 3 5/16"	40.41	10.2/12	3.42
BJ	9' 2 9/16"	39.27	9.8/12	3.42
BK	9' 3 31/32"	38.58	9.6/12	3.41
BL	8' 11 23/32"	41.42	10.6/12	3.32
<b>Total</b>	-	-	-	<b>346.84</b>

Table 1: Perimeter, Pitch and Surface Area (units: ffi / ff<sup>2</sup>)



### Perimeter, Pitch and Surface Area

Label	Perimeter	Slope	Pitch	Surface Area
BM	9' 2 17/32"	37.13	9.1/12	3.31
BN	9' 2 3/32"	38.44	9.5/12	3.29
<b>Total</b>	-	-	-	<b>6.6</b>

Table 1: Perimeter, Pitch and Surface Area (units: ffi / ff<sup>2</sup>)



### Edge Measurements.

Surface(s): A, B, C, D, F, H, I, K, M, N, O, P, Q, R, T, U, V

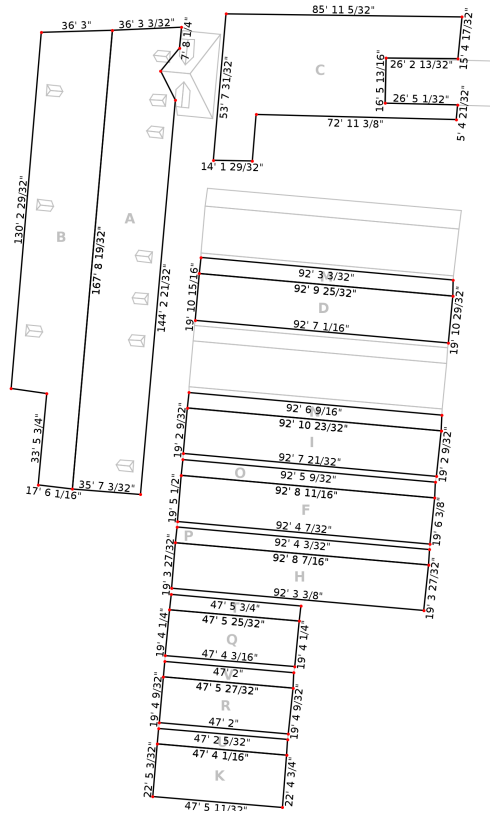


Figure 4: Edge Measurements



### Edge Measurements.

Surface(s): E, G, J, L, S, W, X, Y, Z, AB, AE, AF, AK, AM, AN, AO, AR, AS, AT, AV, AW, AX, AZ, BA, BC, BD

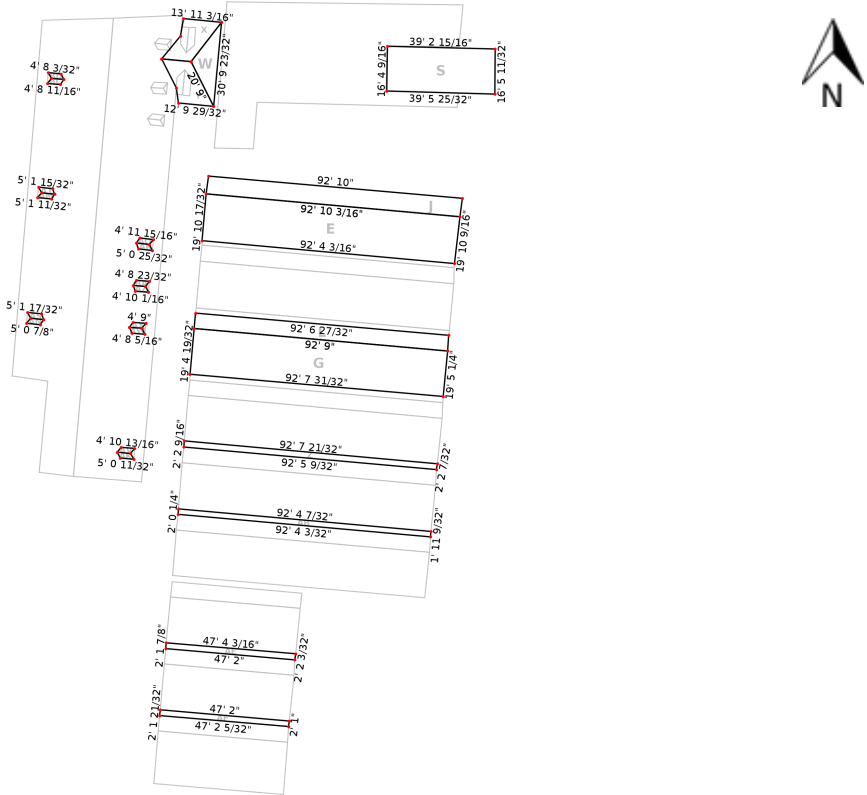


Figure 5: Edge Measurements





### Edge Measurements.

Surface(s): AA, AC, AD, AG, AH, AL, BB, BH, BI, BJ, BK, BL, BM

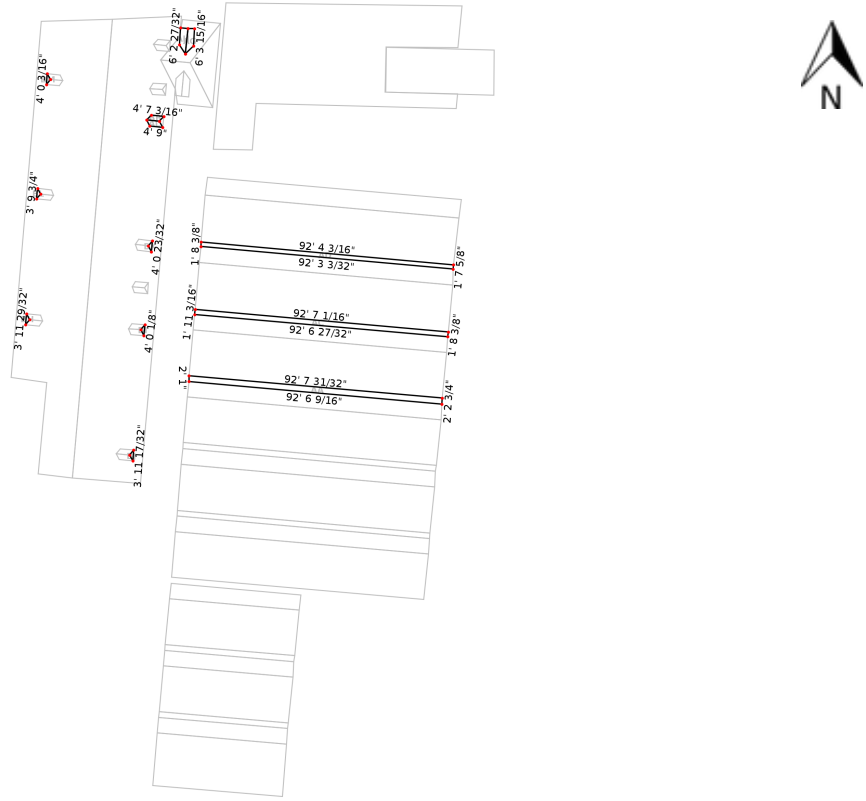


Figure 6: Edge Measurements



### Edge Measurements.

Surface(s): AI, AJ, AQ, AY, BN



Figure 7: Edge Measurements



### Edge Measurements.

Surface(s): AP, AU

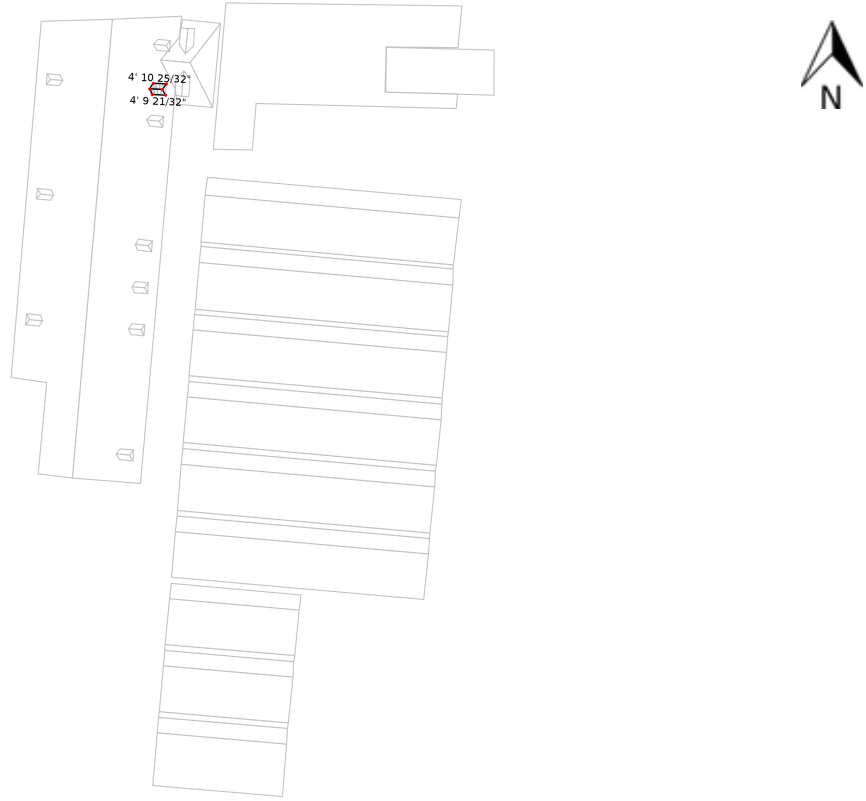


Figure 8: Edge Measurements



### Edge Measurements.

Surface(s): BE, BF

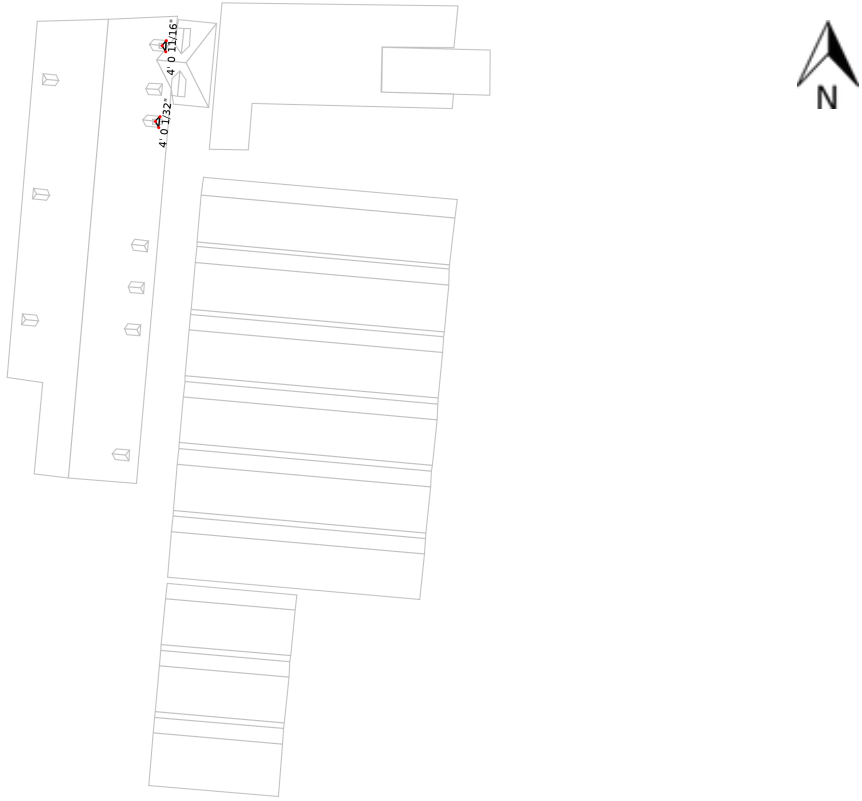


Figure 9: Edge Measurements



### Edge Measurements.

Surface(s): BG

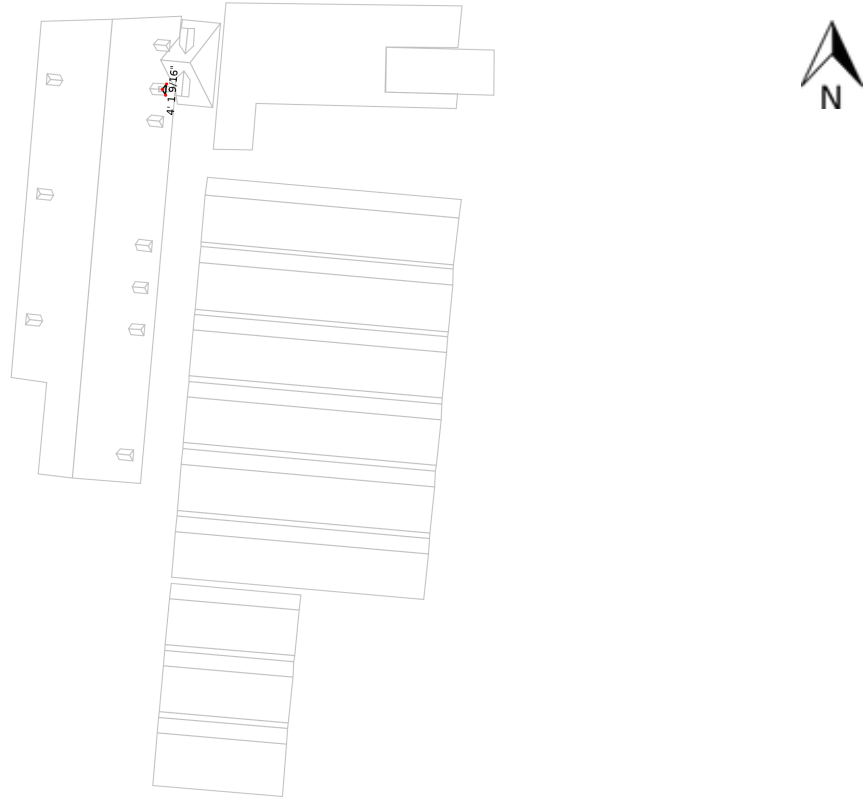


Figure 10: Edge Measurements



### Edges Types

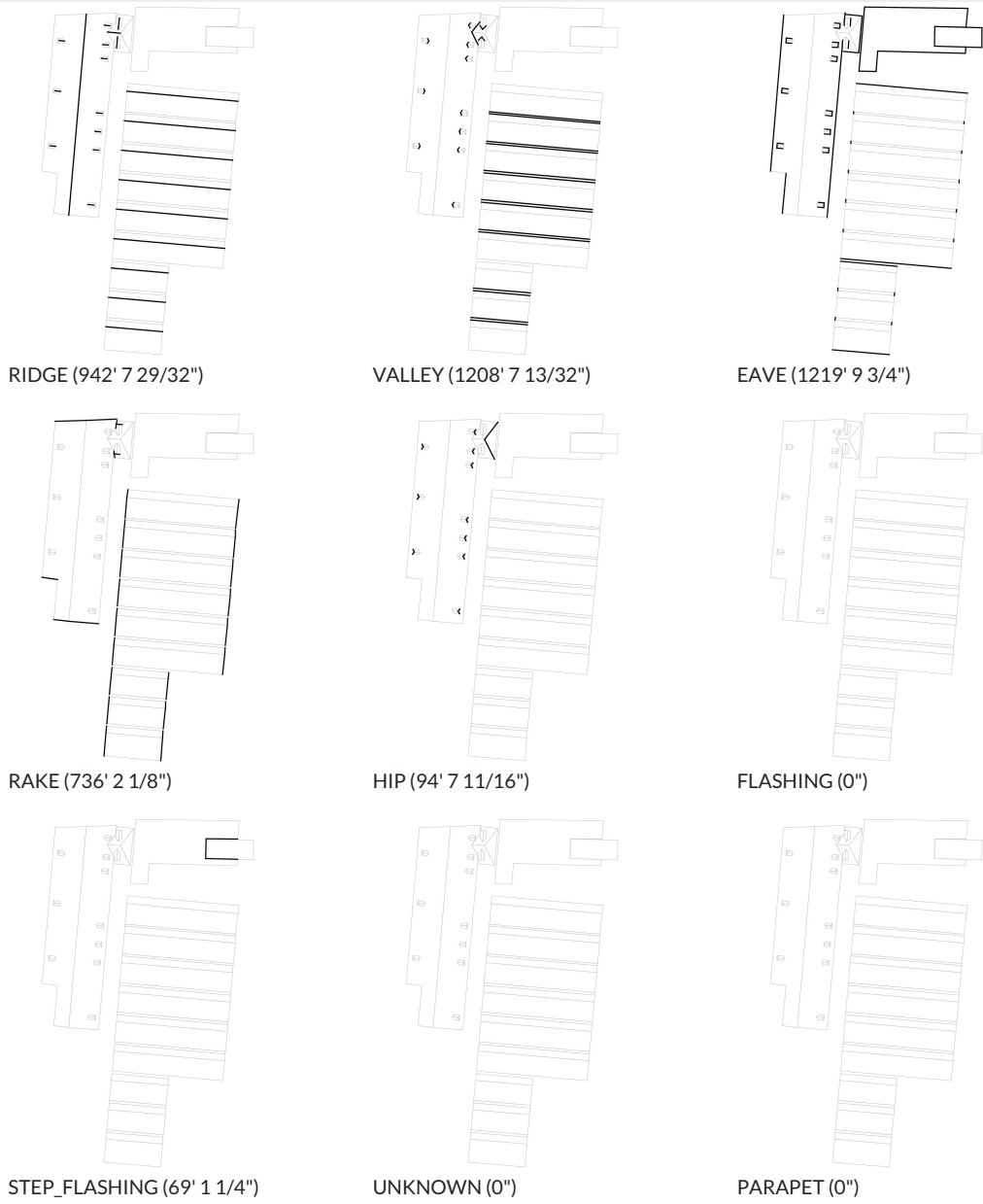


Figure 11: Roof Edge Classification (units: ffi)



### Edge Type Summary

Classification	Edge Count	Total Length
RIDGE	23	942' 7 29/32"
VALLEY	40	1208' 7 13/32"
EAVE	70	1219' 9 3/4"
RAKE	47	736' 2 1/8"
HIP	22	94' 7 11/16"
FLASHING	0	0"
STEP_FLASHING	3	69' 1 1/4"
UNKNOWN	0	0"
PARAPET	0	0"
<b>Total</b>	<b>205</b>	<b>0</b>

Table 2: Edge Type Summary (units: ffi)

